

**SELF Complete**

Series

**SELF**  
 Cover Sheet

**4" Wide Polymer Concrete Trench Drain**

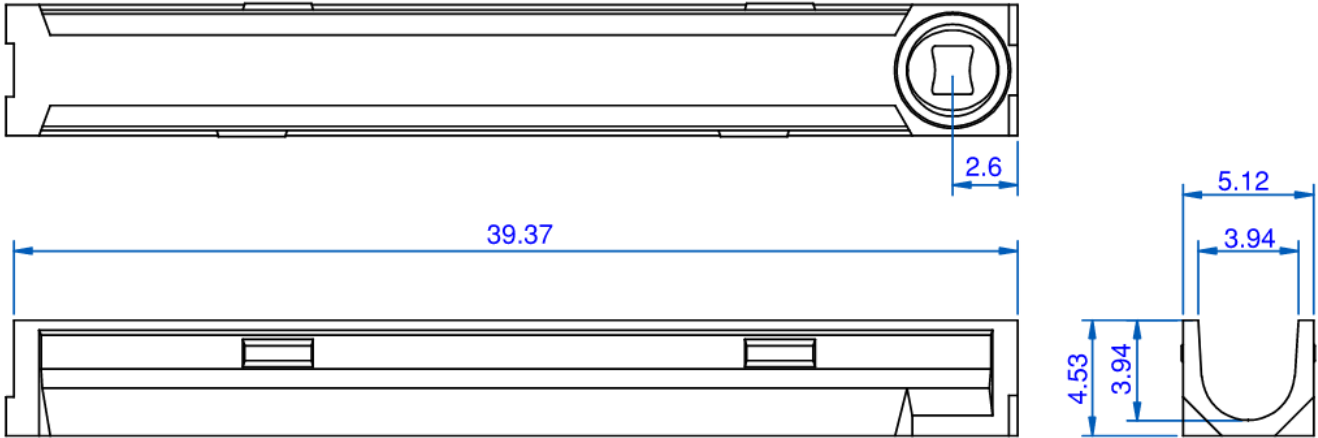
**New Commercial Trench Drain / Driveway Drain  
 4 Inch Wide - A Class Galvanized Grates Standard**
**Complete System Includes:**

Specified number of 1 meter sections of trench drain  
 Specified number of galvanized grates with Lock Bars and Bolts  
 1 - Solid End Caps and 1 - 3.5" End Outlet

**Key advantages of the SELF Polymer Concrete trench:**

- Polymer Concrete Channels
- Load Classes up to C Class
- External Width 5.12"
- Internal Width 3.94"
- Channel Height 4.53"

<b>Number</b>  <b>Self Channel</b>	<b>Series</b>  <b>Ulma Self</b>
--	---------------------------------------



**SPORT SYSTEM**  
**External width: 5.12"**  
**Internal width: 3.94"**  
**Length: 39.37"**

Channel Reference	Height (in)		Hydraulic Section in. sq.	Vertical	Outlet	
	Total	Internal			Horizontal	
<b>SELF</b>	4.53	3.94	13.18	4.33	—	

**Manufacturer**

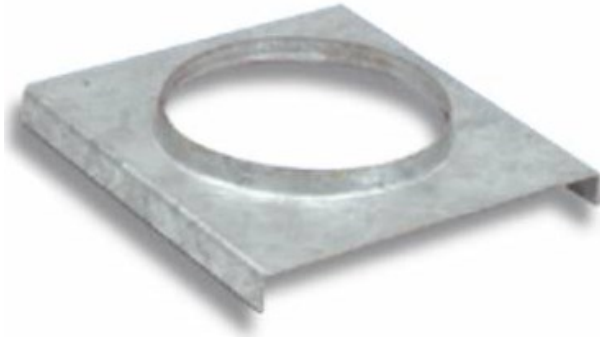


**Specification**

ULMA SELF Polymer Concrete linear drainage channel with Polymer concrete edge for side protection. Load class up to C250, EN1433 Standard.

DISCLAIMER - The customer and the customer's architects, engineers, consultants, and other professionals are completely responsible for the selection installation and maintenance of any product purchased from Trench Drain Supply and/or its manufacturers. TRENCH DRAIN SUPPLY MAKES NO WARRANTY, EXPRESS OR IMPLIED, AS TO THE SUITABILITY, DESIGN, MERCHANTABILITY, OR FITNESS OF THE PRODUCT FOR CUSTOMERS APPLICATION. The drawing and information provided remain the property and copyright of the manufacturer listed. The manufacturer reserves the right to modify specification without notice.

<b>Number</b>	<b>Series</b>
<b>Self Accessories</b>	<b>Self</b> End caps and Lock bars



End Outlet	Closed End Cap	Min Height (in)	Max Height (in)
UTSELF100C	TSELF100A	4.5	4.5



**CS100-T**

**CS100-H**

CS100 –H and CS100-T are locking devices to be used with the U100K, D100, and Self series trench drain.

CS100-H is to be used with all slotted, ductile iron, and composite grates  
CS100-T is to be used with perforated grates (Galv. and S.S.)

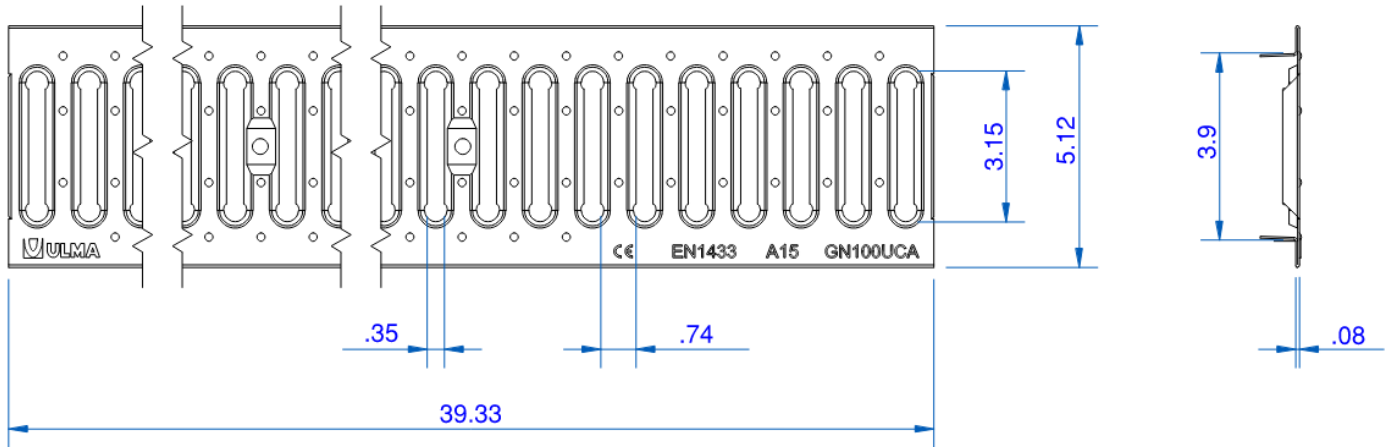
<b>Manufacturer</b>	<b>Specification</b>
	ULMA SELF Accessories SUPPLIED BY TRENCH DRAIN SUPPLY

DISCLAIMER - The customer and the customer's architects, engineers, consultants, and other professionals are completely responsible for the selection installation and maintenance of any product purchased from Trench Drain Supply and/or its manufacturers. TRENCH DRAIN SUPPLY MAKES NO WARRANTY, EXPRESS OR IMPLIED, AS TO THE SUITABILITY, DESIGN, MERCHANTABILITY, OR FITNESS OF THE PRODUCT FOR CUSTOMERS APPLICATION. The drawing and information provided remain the property and copyright of the manufacturer listed. The manufacturer reserves the right to modify specification without notice.

<b>Number</b>  <b>GN100UCA</b>	<b>Series</b>  <b>SELF</b> A Galvanized Steel Slotted
--------------------------------------	--



<u>PART NUMBER</u>	<u>DIMENSIONS</u>	<u>FREE AREA</u>
GN100UCA	39.4" [1000MM]	41.5 SQ. IN.



**Manufacturer**

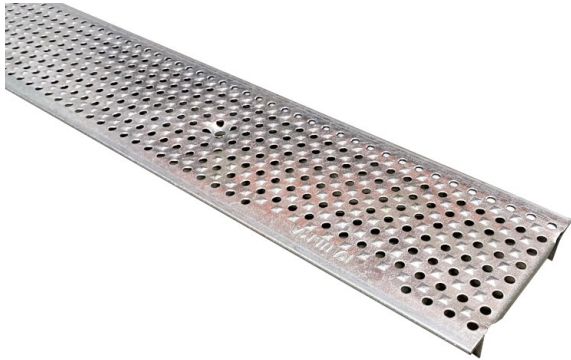


**Specification**

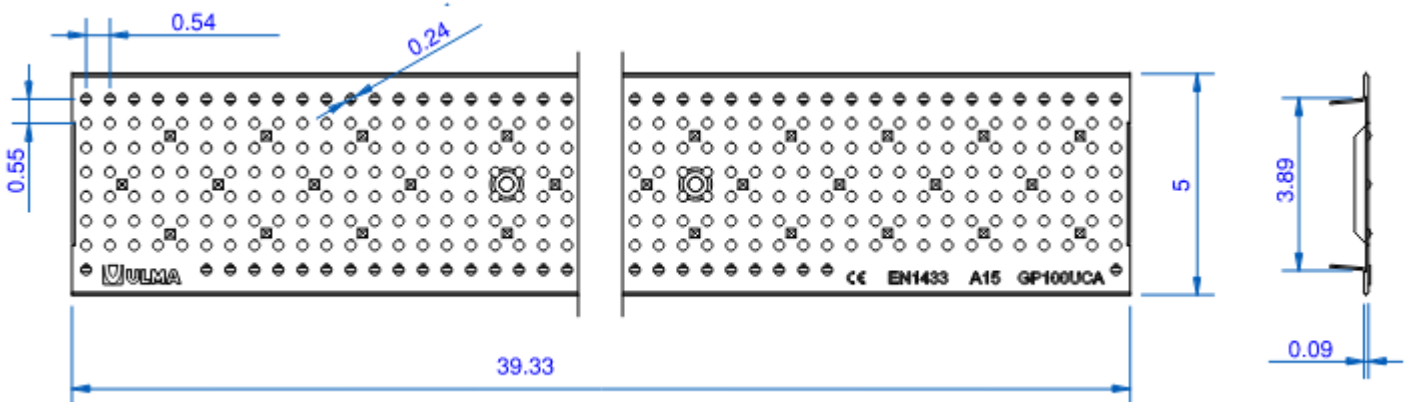
ULMA GN100UCA GALVANIZED STEEL SLOTTED TRENCH DRAIN GRATE WITH CLASS A LOAD RATING (3,500 LBS.—70 PSI), SUPPLIED BY TRENCH DRAIN SUPPLY


DISCLAIMER - The customer and the customer's architects, engineers, consultants, and other professionals are completely responsible for the selection installation and maintenance of any product purchased from Trench Drain Supply and/or its manufacturers. TRENCH DRAIN SUPPLY MAKES NO WARRANTY, EXPRESS OR IMPLIED, AS TO THE SUITABILITY, DESIGN, MERCHANTABILITY, OR FITNESS OF THE PRODUCT FOR CUSTOMERS APPLICATION. The drawing and information provided remain the property and copyright of the manufacturer listed. The manufacturer reserves the right to modify specification without notice.

<b>Number</b>  <b>GP100UCA</b>	<b>Series</b>  <b>SELF</b>  A Galvanized Steel Slotted
--------------------------------------	--



<u>PART NUMBER</u>	<u>DIMENSIONS</u>	<u>FREE AREA</u>
GP100UCA	39.4" [1000MM]	100.9 SQ. IN.



<b>Manufacturer</b>  	<b>Specification</b>  ULMA GP100UCA GALVANIZED STEEL PERFORATED TRENCH DRAIN GRATE WITH CLASS A LOAD RATING (3,500 LBS.—70 PSI), SUPPLIED BY TRENCH DRAIN SUPPLY
--	--

DISCLAIMER - The customer and the customer's architects, engineers, consultants, and other professionals are completely responsible for the selection installation and maintenance of any product purchased from Trench Drain Supply and/or its manufacturers. TRENCH DRAIN SUPPLY MAKES NO WARRANTY, EXPRESS OR IMPLIED, AS TO THE SUITABILITY, DESIGN, MERCHANTABILITY, OR FITNESS OF THE PRODUCT FOR CUSTOMERS APPLICATION. The drawing and information provided remain the property and copyright of the manufacturer listed. The manufacturer reserves the right to modify specification without notice.

1-877-903-7246

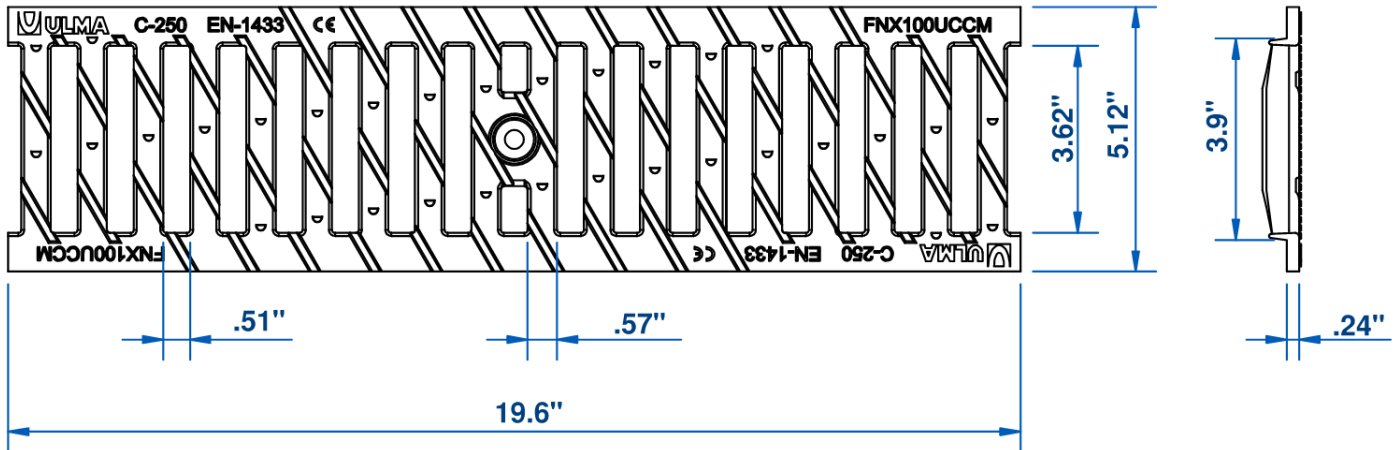
# TRENCH DRAIN SUPPLY


www.trenchdrainsupply.com

<b>Number</b>  <b>GN100UCCM</b>	<b>Series</b>  <b>SELF</b> C Class DI Slotted
---------------------------------------	--



PART NUMBER	DIMENSIONS	FREE AREA
GN100UCCM	19.6" [498MM]	67.4 SQ. IN.



<b>Manufacturer</b>  	<b>Specification</b>  ULMA GN100UCCM DI SLOTTED TRENCH DRAIN GRATE WITH CLASS C LOAD RATING (56,200 LBS.—4683 PSI), SUPPLIED BY TRENCH DRAIN SUPPLY
--	---

DISCLAIMER - The customer and the customer's architects, engineers, consultants, and other professionals are completely responsible for the selection installation and maintenance of any product purchased from Trench Drain Supply and/or its manufacturers. TRENCH DRAIN SUPPLY MAKES NO WARRANTY, EXPRESS OR IMPLIED, AS TO THE SUITABILITY, DESIGN, MERCHANTABILITY, OR FITNESS OF THE PRODUCT FOR CUSTOMERS APPLICATION. The drawing and information provided remain the property and copyright of the manufacturer listed. The manufacturer reserves the right to modify specification without notice.